

Mac Pro Full ATX plus power supply support.

contents:

Backplate;

IO shield (with 7 M3 socket head bolts for PCI-e cards);

Fittings for Backplate and IO shield: 17 x 8mm M3 socket head bolts, 12 M3 washers, 12 M3 nuts;

Motherboard tray pre-fitted with threaded inserts in all mATX/ATX positions;

9 x M3 x 11mm standoffs with 9 M3 screws;

Next Generation motherboard tray in stainless steel, (pre-fitted with threaded inserts and spacers) plus 9 M3 8mm socket head bolts and washers.

Deluxe kit only - drive holder and nylon M3 screws x 16.

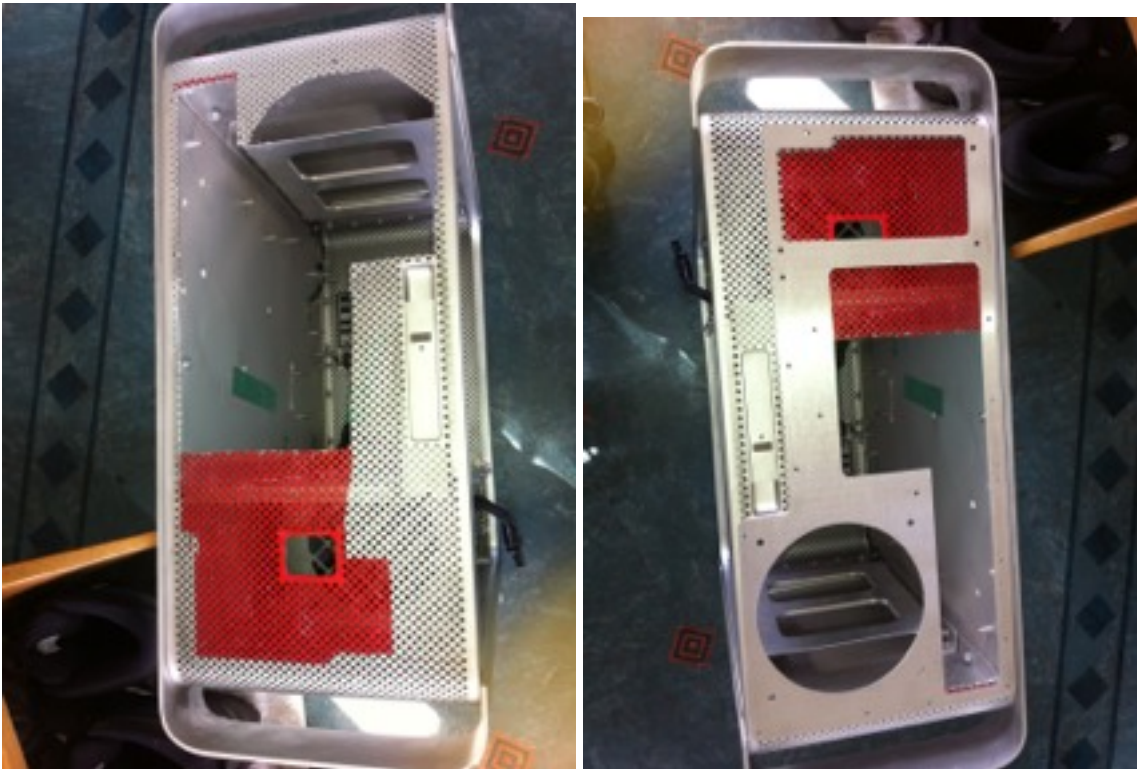
2mm Allen Key

Fitting instructions.

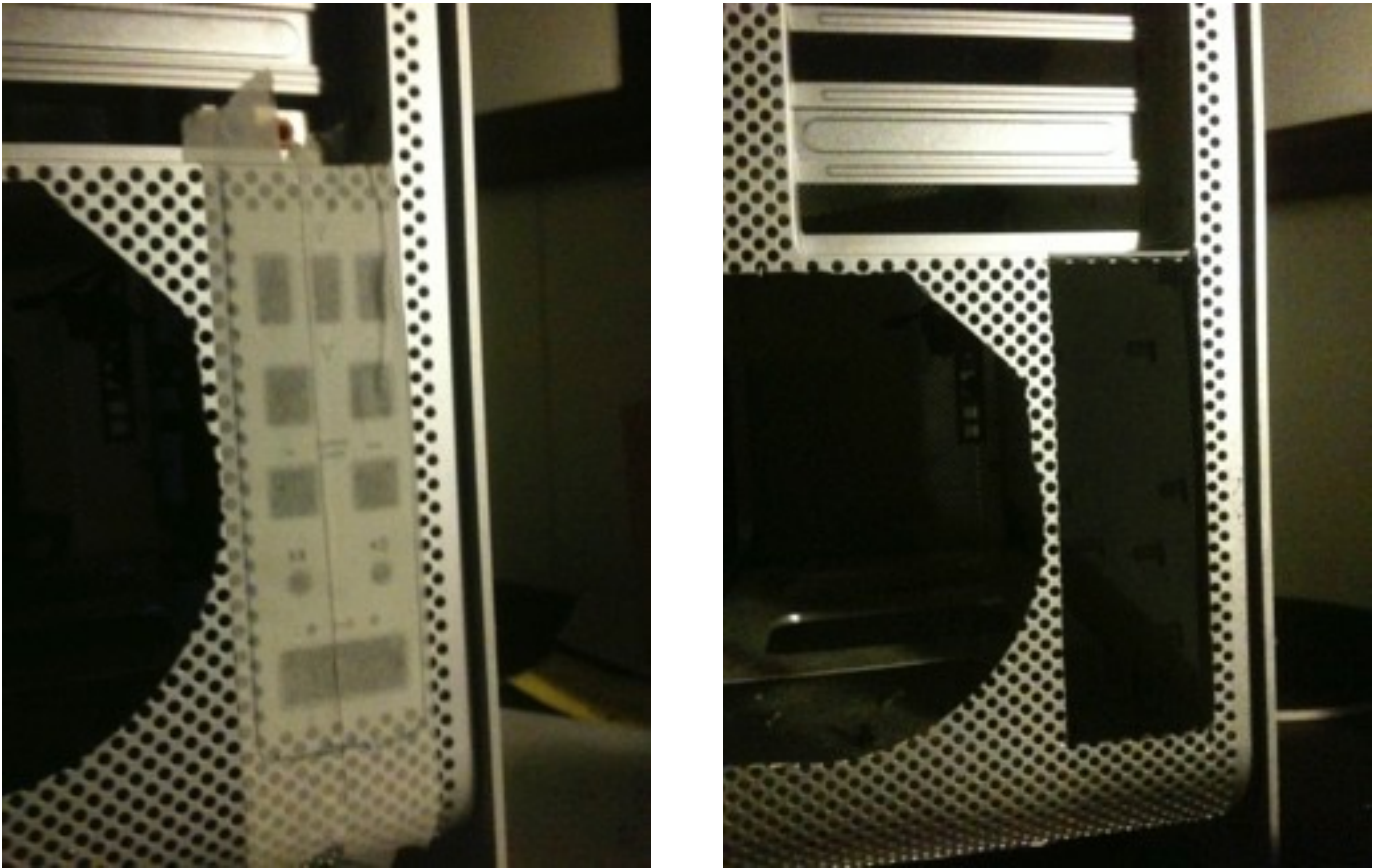
Check backplate position and mark directly on the back of the Mac Pro all the areas that will need removing. Note correct positioning is for the plate to fit as below right. The mounting holes will accord to the Mac Pro mesh pattern except for the PSU mounting holes where you will need to enlarge the top left fixing hole.

Also check your PSU opening has the same open area as the backplate - for some PSUs the area shown top left on the PSU opening may need to be enlarged slightly with a needle file.

Always be cautious when cutting not to cut away too much. Take your time.



Start by masking the area where you will be cutting and using a rotary tool (e.g. Dremel) cut out the original IO section.



You need to remove the PCI slots and this is probably one of the hardest parts - start by cutting around the slots like this you MUST keep one row of holes as marked by the green box:

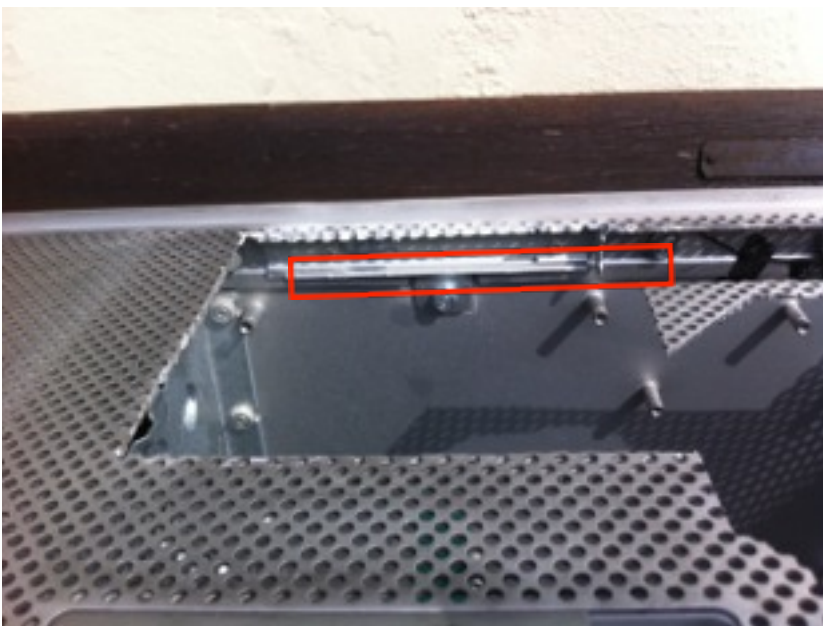


Then you can bend the slots back like this:



And rock the part back and forwards until the PCI slots come out.

I recommend you then remove the bottom part of the PCI slots shown in red below, this needs to be done from inside the case.



There are a couple of rivets you will need to cut with the Dremel and when you have done that it should look like this:



Carefully check around where the PCI slots were and remove any traces of them - remaining parts where the slots were welded in place can be removed using a small screw driver from inside the case.

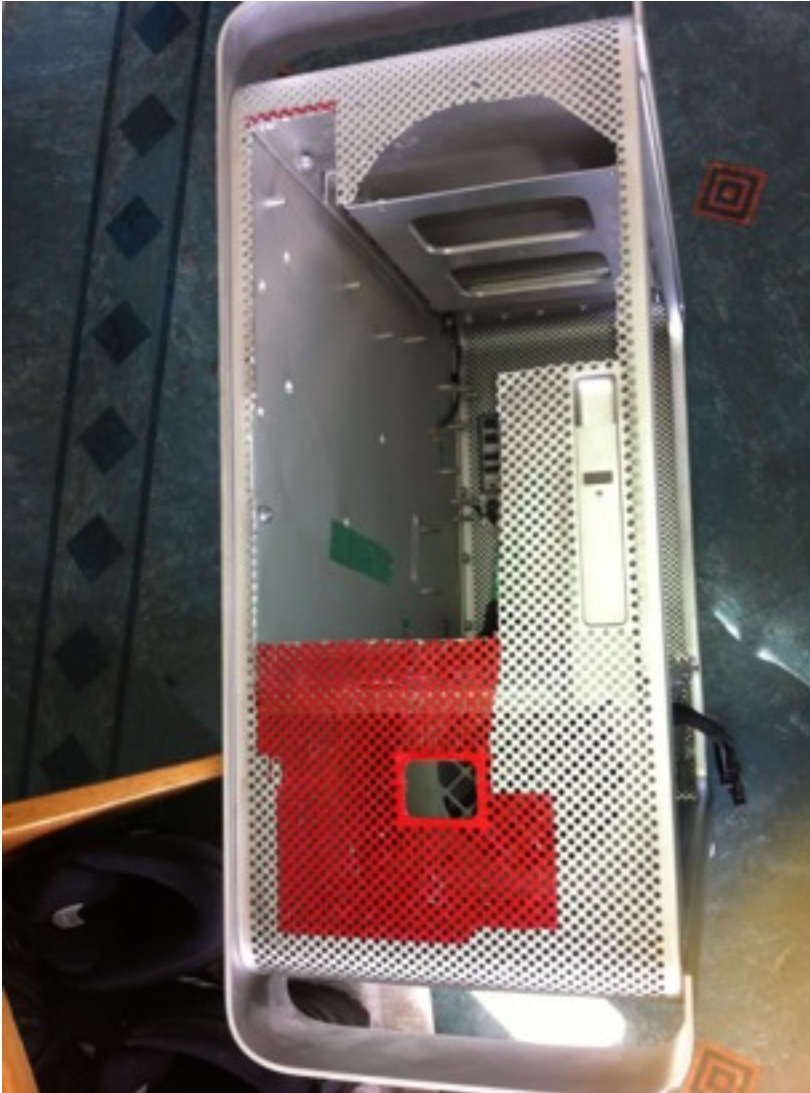
Once the slots have been removed then put the backplate in position to check where else you will need to cut away material.

Here are some key points. On the long edge next to IO keep 1 row of holes; Keep at least one row of holes under the handle and 10 rows to the right of the handle, keep 2 rows of holes above the curved portion of the case bottom.



For the full ATX kit with PSU holder you need to also cut away the red parts shown below.

Remember don't cut too much. If you cut too little you can always come back later and cut more.....



Fitting the backplate:

Put the backplate onto the back of the Mac Pro as shown and attach using the screws, washers and nyloc nuts to hold it in place (these screws shown in **green** below) . Then attach the IO shield using screws, nuts and washers for the **orange** circled positions. Note that nuts and washers are NOT needed for the long side of the IO plate as the holes on the shield here (circled **yellow**) will self tap when you insert the screws into them using the allen key provided. Don't do these screws up too tightly as the threads at that point can be stripped if they are overtightened.

Then test fit your ATX supply (screws shown in **purple**). Please note that power supply screw fixings are NOT included. Note that any obstructions to fitting the PSU need to have been removed before this - notably the shelf must be removed and the plastic angled strips on the case wall adjacent the PSU fitting position need to be pulled off (if present).

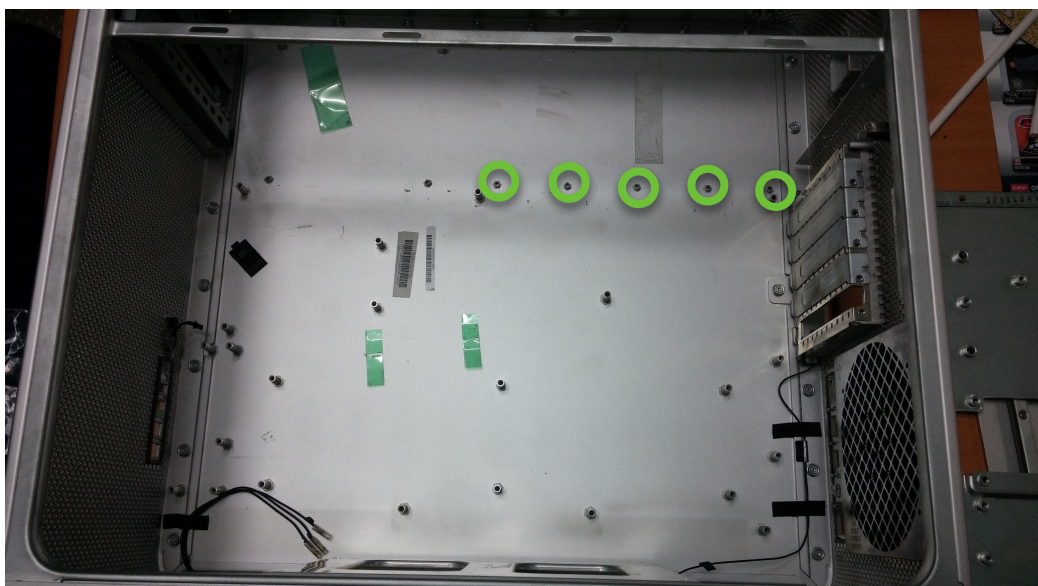


Fitting the Motherboard Tray:

The interior of the Mac Pro needs to be prepared for the new motherboard tray which is of our “Next generation” type with in brush finished stainless steel.



If your Mac Pro has an internally fastened lower shelf as shown in the photo above (i.e. a shelf at the bottom of the case with a support as shown) then this lower shelf support must be removed. This will need to be painstakingly cut out before the concealed fixings can be reached



Mounting points for the tray are the shelf mount points circled in the photo above and...




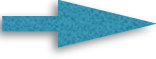
The four rear most of the lower case screws mounting points- i.e. referring to the photo to the right, the blue arrow indicates one of the case screw mounts.

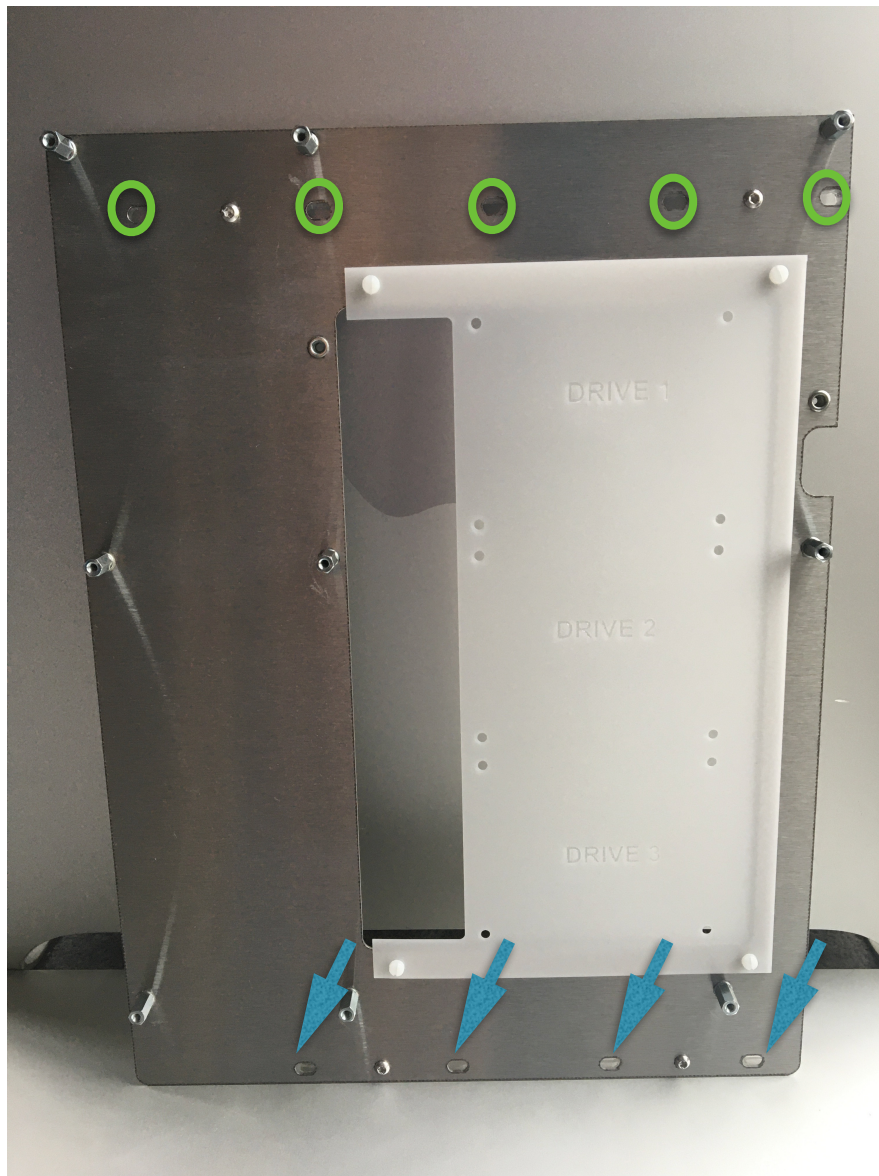
All other screw mountings and standoffs within the area of the Mac Pro where the new tray fill sit will now need to be removed - this can be done with a Dremel or similar as shown below.



An example of the Mac Pro stainless steel Deluxe version tray is shown below. Standard tray is the same as the Deluxe except it does not include the white SSD carrier.

The green circles  indicate slots where the tray will mount to the shelf screw area using five M3 bolts and washers. While the blue arrows

 point to slots where the tray will fix to the lower case screw mount points using four M3 bolts and washers.



For full details of the “Next Generation tray” the parts and fitting please see our separate document - TNG Tray Notes which explains how they work.

A final note before you fit everything back into your Mac Pro is that you will need to trim the top shelf so that the motherboard and PSU can fit. Only trim off as much as you need to allow the PSU and motherboard to fit in place comfortably.





Contact

Congratulations, the kit is all fitted and hopefully all went well!

This kit was developed at the Laser Hive and is exclusively available from the Laser Hive. We pride ourselves on answering any questions and solving problems, so PLEASE if anything goes wrong or you have any problems at all then contact Dave Chugg by emailing info@thelaserhive.com

We stand by our products and will always advise, replace or refund in the case of any difficulty. So as your first priority please give us the chance to solve your problems. We guarantee to react positively and quickly.